

CLERK'S OFFICE
APPROVED
Date: 12-16-03

Submitted by: Chairman of the Assembly
at the request of the
School Board
Prepared by: Anchorage School District
For Reading: December 16, 2003

ANCHORAGE, ALASKA
AR NO. 2003-349

A RESOLUTION OF THE ANCHORAGE MUNICIPAL ASSEMBLY APPROVING
THE PRELIMINARY (CONCEPTUAL) DESIGN OF THE CHESTER VALLEY
ELEMENTARY SCHOOL ADDITION AND RENOVATION PROJECT

WHEREAS, Alaska Statute 14.14.060(e) provides that the Assembly approve the preliminary design approved by the School Board for design of school facilities, and


WHEREAS, the School Board has approved the preliminary design, consisting of a Conceptual Plan, for Chester Valley Elementary School Addition and Renovation Project.

NOW, THEREFORE, the Anchorage Assembly resolves:

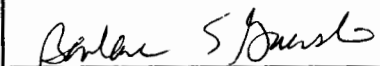
Section 1. The Assembly hereby approves the preliminary design for Chester Valley Elementary School Addition and Renovation Project.

Section 2. This resolution shall become effective immediately upon its passage and approval by the Anchorage Assembly.

PASSED AND APPROVED by the Anchorage Assembly this 16th day of
December, 2003


Chair of the Assembly

ATTEST


Municipal Clerk

ANCHORAGE SCHOOL DISTRICT
ANCHORAGE, ALASKA

AM 866-2003

MEMORANDUM

December 16, 2003

TO: THE HONORABLE MARK BEGICH
ANCHORAGE ASSEMBLY

FROM: OFFICE OF THE SUPERINTENDENT *Carol Comeau*

SUBJECT: APPROVAL OF THE PRELIMINARY (CONCEPTUAL) DESIGN FOR
THE CHESTER VALLEY ELEMENTARY SCHOOL ADDITION AND
RENOVATION PROJECT

In accordance with AO NO. 2000-106(S), this memorandum provides information required for submission and approval of the preliminary design for Chester Valley Elementary School Addition and Renovation Project. The preliminary design consists of a conceptual design to increase Chester Valley to a 26-classroom school. The Conceptual Design was approved by the School Board on November 24, 2003.

The School Board approved the selection of McCool Carlson Green Architects to be the Architects of Record on September 22, 2003 and the Assembly approved the selection on October 21, 2003 (AR 2003-301).

AO NO. 2000-106(S) requires a description of the proposed school site; school building and building program; the projected student population; the total construction budget and the funding source; the projected project schedule; and any known neighborhood impacts, comments, reactions, which reflect potential impacts of the school building on the neighboring community. These responses follow:

Chester Valley Elementary School is located on a 7.64-acre site in northeast Anchorage at 1750 Patterson Street. The existing 19-classroom school delivers educational programs for kindergarten through sixth grade. It was built in 1964 with a classroom addition and multipurpose room added in 1966.

The Preliminary Plan design is based on the Districtwide Elementary Educational Specifications for a 26-Classroom Elementary School adopted by the School Board November 2000. The current student population is 319 or 97 percent capacity, and houses Ptarmigan kindergarteners while their school is being renovated. Chester Valley Elementary School is not over capacity at 97 percent this year, although adjacent schools are over capacity. The neighboring schools of Susitna, 121 percent capacity, and Scenic Park, 119 percent capacity, are overcrowded. In addition to current housing growth in

43 the northeast area, future development of the Creekside Town Center is anticipated to add
44 1,200 housing units, thereby impacting projected enrollments.

45
46 On April 1, 2003 voters approved \$750,000 in design funding for the addition and
47 renovation of Chester Valley Elementary School. It is anticipated that construction
48 funding will be requested in spring 2004. Based upon approval of construction funding
49 in April 2004, construction will be scheduled to start spring 2005 and complete in
50 September 2006. The estimated construction cost is \$10.9 million.

51
52 The Chester Valley Elementary School Addition and Renovation project scope will
53 renovate the existing school as well as adding additional space to support four classrooms
54 for grades one through six, four kindergarten classrooms, an art room, new gym and
55 special education and support spaces to meet the program needs for a standard 26-
56 classroom elementary school.

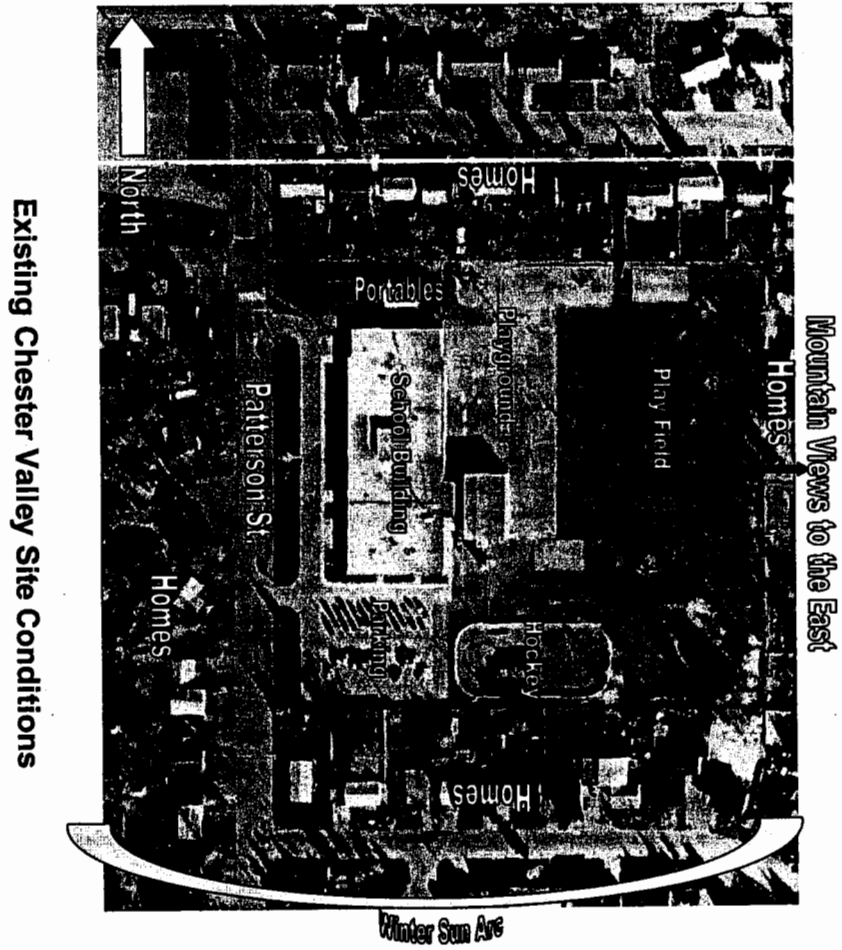
57
58 All Building Design Committee meetings were attended by members of ASD Facilities
59 Department and members of the Chester Valley Elementary School administration, staff,
60 teachers, and parents. All facility and community concerns brought up at these meetings
61 have been addressed in the design, and there are no anticipated negative impacts on the
62 school building or neighboring community.

63
64 Attached is a set of Preliminary (Conceptual) design drawings.

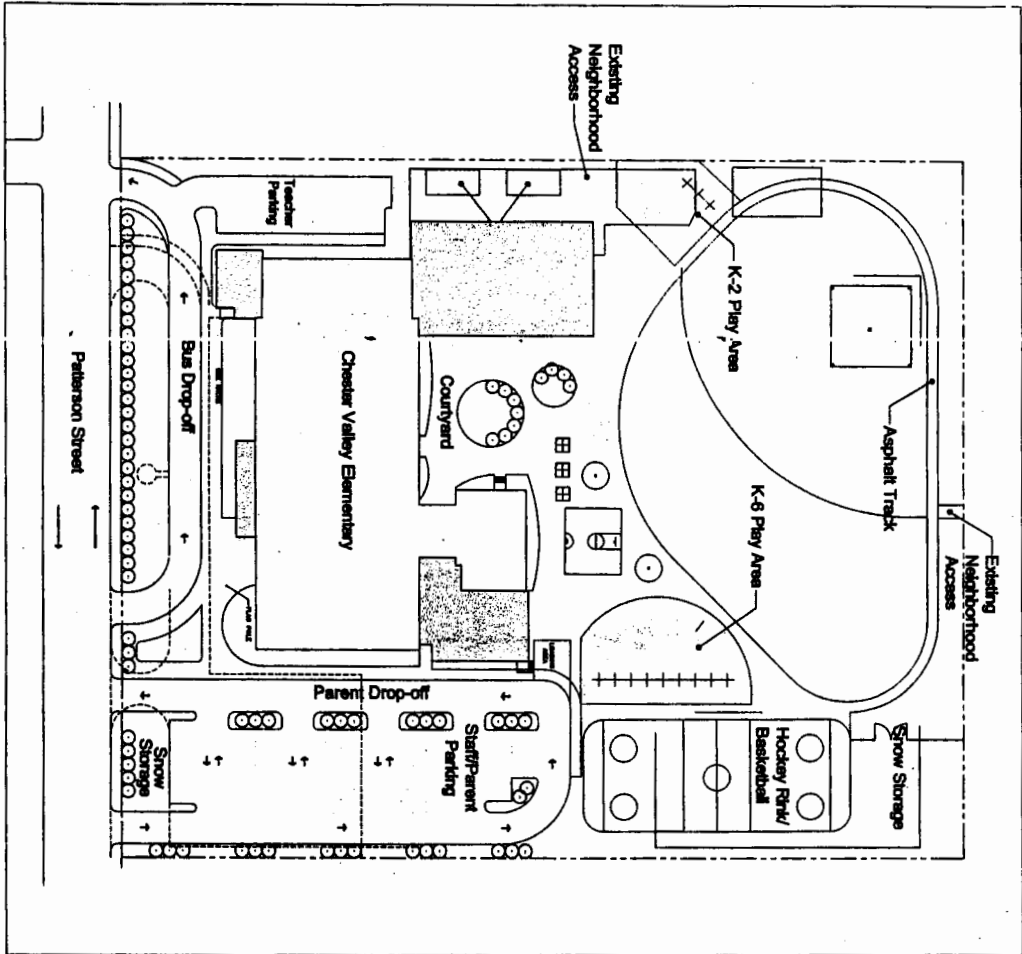
65
66 AR-2003-349

67
68 Attachment

ref AR 2003-349



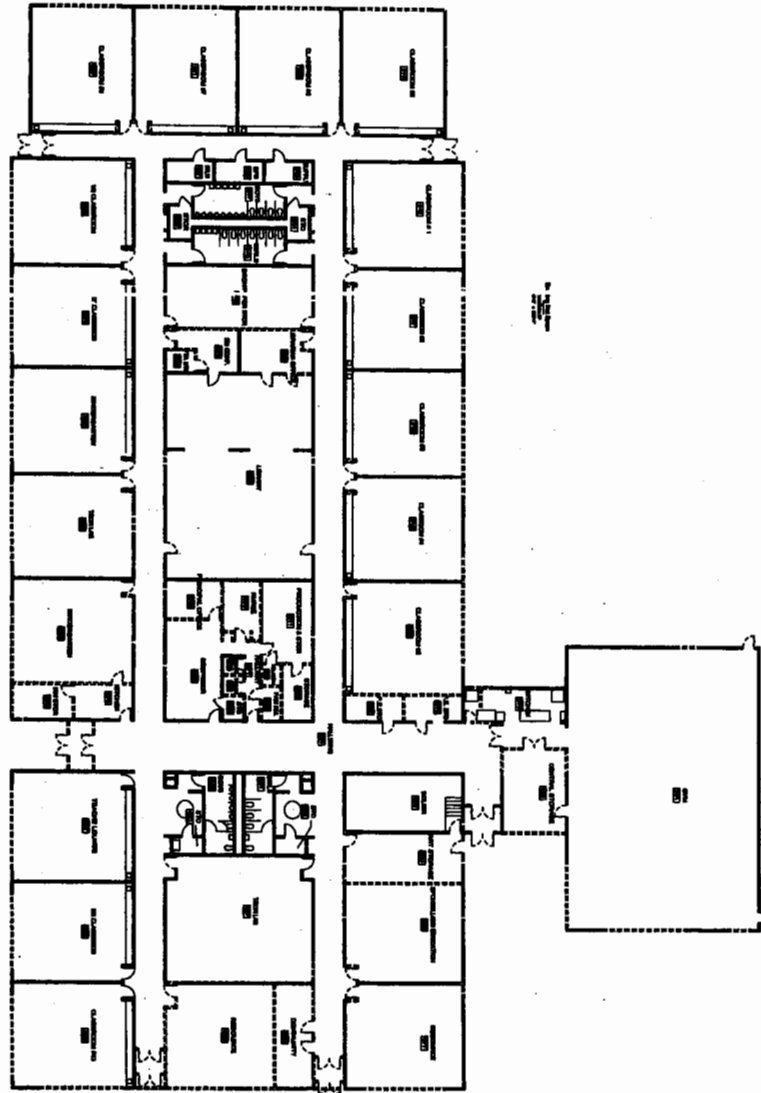
Existing Chester Valley Site Conditions



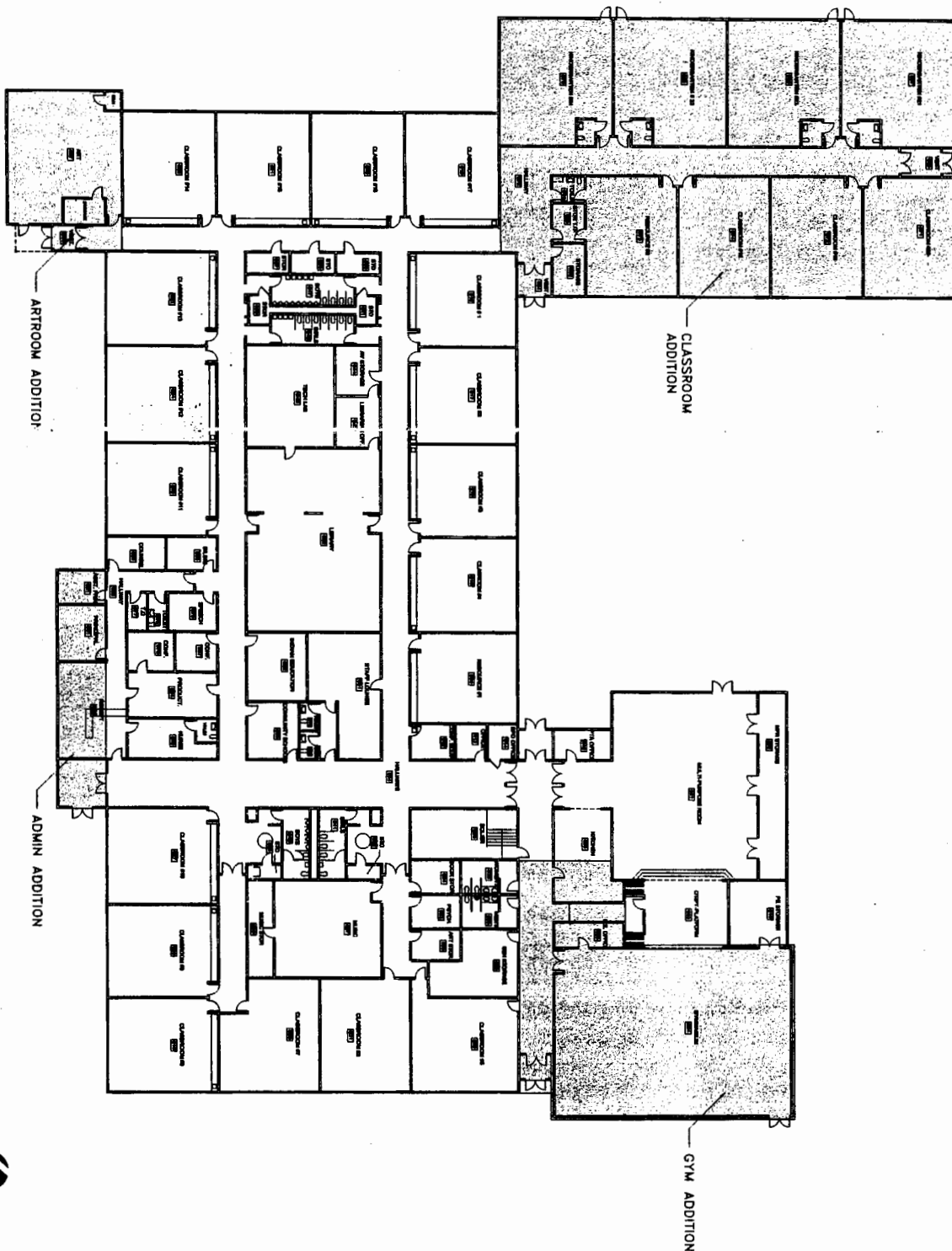
Site Plan



12 FLOOR PLAN- EXISTING



A111	PROGRAM PHASE CHESTER VALLEY ELEMENTARY - 28 CLASSROOM OPTION 1700 PATTERSON STREET JEFFERSON COUNTY, MISSOURI			SHEET NO. 1111 DATE 10-10-00 DRAWN BY J. G. G.
	LEVEL 1 DEMOLITION FLOOR PLAN			PROJECT NO. 1111 DATE 10-10-00 DRAWN BY J. G. G.
	PROJECT NO. 1111 DATE 10-10-00 DRAWN BY J. G. G.			
	PROJECT NO. 1111 DATE 10-10-00 DRAWN BY J. G. G.			



PROGRAMMING PHASE

PROJECT NO.
A211

CHESTER VALLEY ELEMENTARY - 26 CLASSROOM OPTION
1705 PATTERSON STREET
ANDOVER, OHIO 44806
LEVEL 1
NEW FLOOR PLAN



MCCOOL CARLSON GREEN
ARCHITECTS

DATE	11/08	BY	AW
DATE	11/08	BY	AW
DATE	11/08	BY	AW
DATE	11/08	BY	AW

Municipality of Anchorage
MUNICIPAL CLERK'S OFFICE
Agenda Document Control Sheet

AX 2013-349

(SEE REVERSE SIDE FOR FURTHER INFORMATION)

1	SUBJECT OF AGENDA DOCUMENT Approval of the Preliminary (Conceptual) Design for the Chester Valley Elementary School Addition and Renovation Project	DATE PREPARED 11/17/03
		Indicate Documents Attached <input type="checkbox"/> AO <input checked="" type="checkbox"/> AR <input checked="" type="checkbox"/> AM <input type="checkbox"/> AIM
2	DEPARTMENT NAME ASD FACILITIES DEPT.	DIRECTOR'S NAME RAY AMSDEN
3	THE PERSON THE DOCUMENT WAS ACTUALLY PREPARED BY RAY AMSDEN	HIS/HER PHONE NUMBER 348-5156
4	COORDINATED WITH AND REVIEWED BY	INITIALS DATE
	Mayor	
	Municipal Clerk	
	Municipal Attorney	
	Employee Relations	
	Municipal Manager	
	Cultural & Recreational Services	
	Fire	
	Health & Human Services	
	Merrill Field Airport	
	Municipal Light & Power	
	Office of Management and Budget	
	Police	
	Port of Anchorage	
	Public Works	
	Solid Waste Services	
	Transit	
	Water & Wastewater Utility	
	Executive Manager	
	Community Planning & Development	
	Finance, Chief Fiscal Officer	
	Heritage Land Bank	
	Management Information Services	
	Property & Facility Management	
	Purchasing	
	Other	
	Carol Comeau, Superintendent, ASD	<i>Carol Comeau 12/1/03</i>
	George Vakalis, Asst. Superintendent, Support Services	<i>11/2/03</i>
5	Special Instructions/Comments	
6	ASSEMBLY HEARING DATE REQUESTED 12/16/03	7
		PUBLIC HEARING DATE REQUESTED 12/16/03